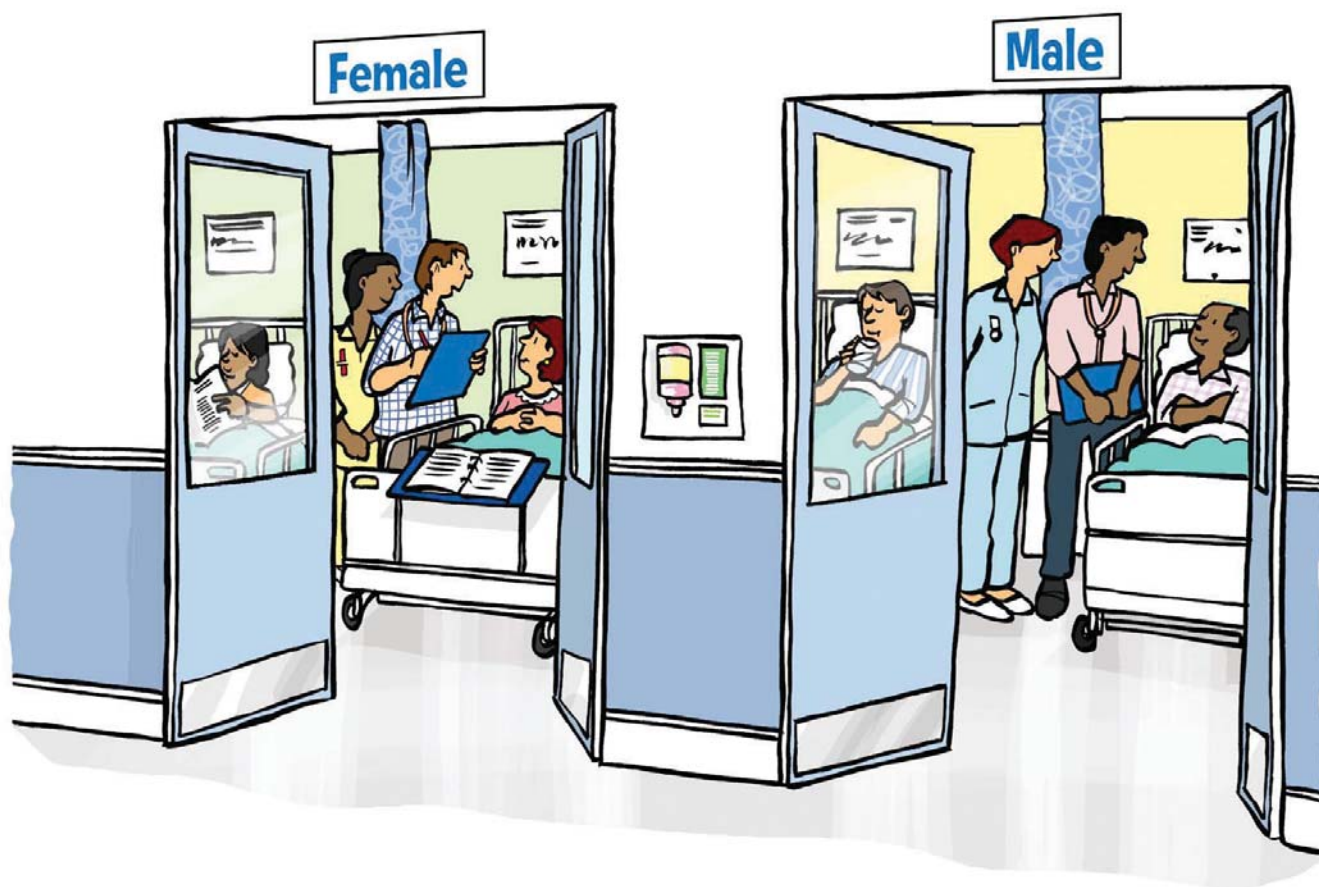
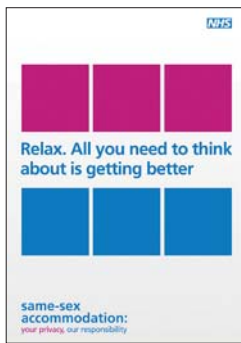


# Same-sex accommodation



**This booklet tells you how we are making sure that men and women will not have to share rooms, toilets or bathrooms, when they are in hospital.**

# What is this booklet about?



The NHS has written a leaflet called **Relax. All you need to think about is getting better**. This booklet is an easy read version of that leaflet



It tells you about what we are doing to make sure that when you are in hospital your stay is as nice as possible.



When we say **we** in this booklet, we mean the **National Health Service** or **NHS** for short.



You may like to have someone to support you when you look at this booklet.

# What do we want to do?



If you don't feel well and you need to stay in hospital, we want to make sure that your stay is as nice as possible.



We want to make sure that men and women do not have to share the same room in hospital, which will make your stay nicer.



Most people will share a room with less than six beds. This is called a bay.

A hospital ward can be made up of a number of bays.

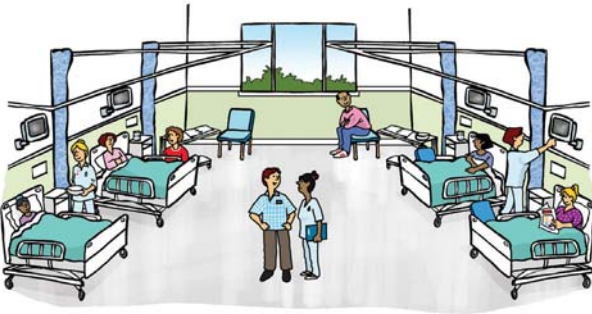
# What to expect



Sometimes you will sleep in a room by yourself, but most people share a bay with other people.



If you are a man you will only share a bay with other men.



If you are a woman you will only share a bay with other women.



The doctors and nurses looking after you will probably be both men and women.



The toilet and bathroom will be close to your bed so you can get to them easily.



If you are a man, you will only share a toilet or bathroom with other men.



If you are a woman, you will only share a toilet or bathroom with other women.

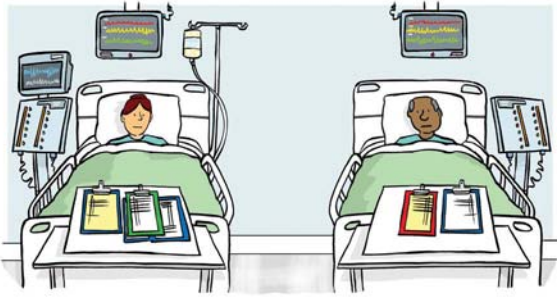


Hospitals may have a room that some men and women can use during the day to eat or relax.



Some hospitals will have a room that only women can use during the day.

# When do men and women have to share?



If we need to care for you very quickly, or we have to use a special machine to help you, you might have to share with men and women. This could be if you are in intensive care or casualty.



But we will tell you before we do this and try to move you as quickly as we can.

# How to find out more

If you have any questions about your room or you want to know more, please ask:



- someone at the hospital



- a member of your family or your carer



You can also find out more at:

**[www.nhs.uk/samesexaccommodation](http://www.nhs.uk/samesexaccommodation)**



© Crown copyright 2009  
297111 1p November 2009  
Produced by COI for the Department of Health

Gateway Ref: 12849